

# HORIZONTAL BALERS

## Atlas<sup>®</sup> ET

Horizontal Balers for Non-Ferrous Materials



*The Atlas ET (extra tough) features 500BHN liners, S-7 hardened steel ram and body shear blades for tough application requirements. Blades are bolt-in, reversible, and flippable for longer life and easy maintenance.*



### Atlas<sup>®</sup> ET Features

- ▼ Heavy construction - perfect for the non-ferrous scrap metal industry
- ▼ Vertical tie-off for baling without pre-processing
- ▼ Programmable controller for automatic or manual cycling
- ▼ Full penetration ram is standard
- ▼ Produces 60" x 30" x 48" bale
- ▼ Wire guides for quick & easy ties through chamber door

### The Worldwide Leader in Quality Recycling and Compaction Equipment

Marathon<sup>®</sup> Equipment is known throughout the world as one of the leading manufacturers of quality on-site recycling products. The **Marathon** brand has been the industry standard for quality and innovation for more than 50 years, and includes auto-tie balers, manual-tie balers, two-ram balers, MRF systems, conveyors, vertical balers, auger-style compactors, cart dumpers, and a wide array of options for virtually any application.



**Environmental Solutions Group<sup>®</sup>**

a **DOVER** company

## Atlas<sup>®</sup> ET Horizontal Baler

### Overview

#### Perfect for:

-  Used Beverage Cans
-  Aluminum Siding
-  Aluminum Downspouts and Gutters
-  Automotive Radiators
-  Metal Cans (soup, etc.)
-  Copper Wiring
-  Copper Roofing & Sheets

### Why Marathon<sup>®</sup> Equipment Is the Preferred Choice

**Marathon Atlas ET** (Extra Tough) mid-size horizontal balers offer affordable, highly efficient compaction for non-ferrous scrap. With heavy-duty and stress-engineered construction, the **Atlas** offers a superior size-to-weight ratio to meet the demands of scrap baling applications. The specially designed bolt-on, replaceable body and ram-shear blades provide optimum performance and ease-of-maintenance, which eliminates pre-cutting of most materials.

The **Atlas ET** features 400F liners and S-7 hardened-steel ram and body-shear blades for even tougher application requirements.

The **Atlas Non-Ferrous Baler** is the ideal choice for facilities baling from one to three tons of aluminum and steel cans, aluminum and copper wire, aluminum siding, extrusion, radiators, etc.

### Atlas<sup>®</sup> ET Features

- ▼ Heavy construction – perfect for the non-ferrous scrap metal industry
- ▼ The **Atlas** Series features stress-engineered construction for a superior size-to-weight ratio
- ▼ Vertical tie-offs allow for efficient baling without the need for pre-processing. Six tie positions and wire guides allow for quick and easy ties, right through the bale chamber door
- ▼ Multiple hopper configurations available, including three-sided, extra wide, and skid-steer hopper units
- ▼ Produces a 60" x 30" x 48" size bale
- ▼ The programmable UL and CUL Listed controller permits automatic or manual cycling
- ▼ The full-penetration ram provides maximum compaction and full ejection
- ▼ Dual-interlock on the bale chamber door
- ▼ Optional above-ground or pit conveyors available



The **Marathon Atlas ET** Balers feature an hydraulic door latch.



The touchscreen enables full automatic and manual control with one touch. Screens may be customized, password protected, and are designed with alarm, diagnostic, and help screens.



High-efficiency power unit and electrical disconnect.

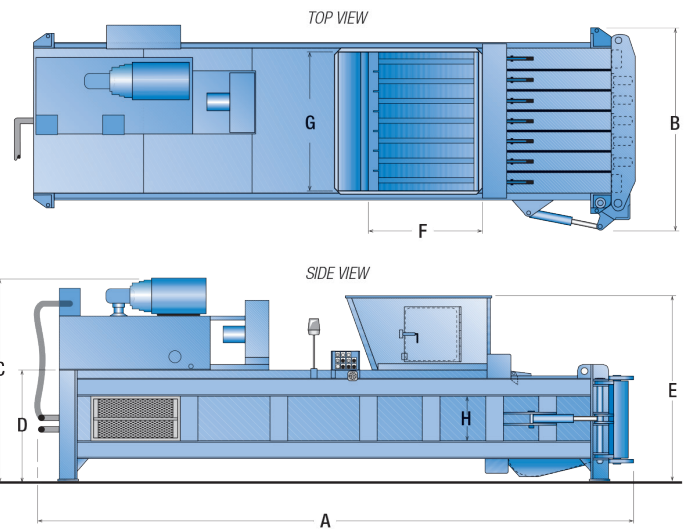
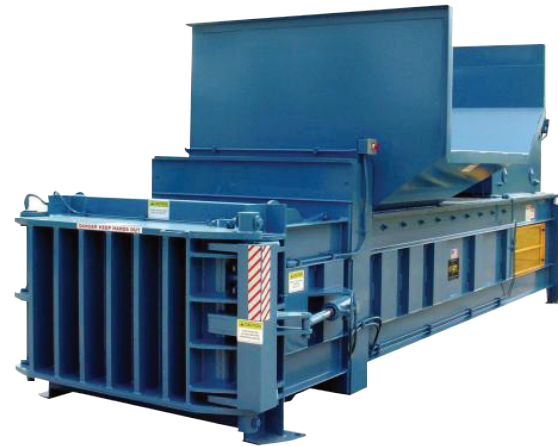
# HORIZONTAL BALERS

## Atlas® ET



### Dimensions and Specifications

Specifications		
Nominal Bale Size (W x H x L)	60" x 30" x 48"	1524mm x 762mm x 1219mm
Clear-Top Opening (L x W)	45" x 56"	1143mm x 1422mm
Unit Weight (dry)	28,000 lbs.	12701 kg
Performance Characteristics		
System Pressure	2,800 psi	193 bar
Platen Force	219,900 lbs.	978 kN
Platen Pressure	139 psi	958 kPa
Cycle Time (partial penetration)	22 seconds	
Electrical Equipment		
Electric Motor 3/60/230-460	50 hp	37 kW
Electric Control Voltage	120 VAC	
Hydraulic Equipment		
Pump Type	Vane	
Pump Capacity	94 gpm	356 lpm
Reservoir	200 gal.	757 L
Hydraulic Cylinder(s)	1	
Bore	10"	254mm
Rod	7"	178mm
Stroke	96"	2438mm



Dimensions	(A) Overall Length	(B) Overall Width	(C) Overall Height	(D) Body Height	(E) Feed Height	(F) Charge Box Length	(G) Charge Box Width	(H) Charge Box Height	Clear Top Opening (L x W)
Atlas® ET	22' 10" (6960mm)	7' (2134mm)	93 3/4" (2381mm)	48 1/2" (1232mm)	6'-8" (2032mm)	45" (1143mm)	60" (1524mm)	29" (737mm)	45" x 56" (1143mm x 1422mm)

Pictures and mechanical diagrams in this literature are illustrative only and may not be to scale. Specifications are subject to change without notice in order to accommodate improvements to the equipment. Certified in compliance with ANSI standard Z245.2 and all applicable OSHA Regulations. Products must be used only by trained operators in accordance with the Operator Manual, as well as applicable regulations, laws, and ANSI standards.

#### We're Here To Help!

For detailed specifications, recommendations, or to request a site survey comparing various systems, contact the Marathon® Sales Team at [MarathonSales@MarathonEquipment.com](mailto:MarathonSales@MarathonEquipment.com)

#### Authorized Dealer:



Awarded Contract

Contract # 040621-MEC

Marathon Equipment Company | P.O. Box 1798 | Vernon, AL 35592-1798

Learn more about Marathon Equipment: 800.633.8974 | [www.marathonequipment.com](http://www.marathonequipment.com)