

TRANSFER STATIONS

High Volume *Transfer Systems*



BlokPak 3000®



M-Series compactor

* Shown with optional Rawhide Series® package

Features

- ▼ Process up to 90 tons of material per hour
- ▼ Compact materials directly into transfer trailer
- ▼ Multiple options available to suit your application

The Worldwide Compaction Leader

Marathon® Equipment is known throughout the world as one of the leading manufacturers of quality on-site waste compaction products. The RamJet® brand has been the industry standard for quality and innovation for more than 50 years, and includes stationary, self-contained, apartment, and high-rise compactors, compaction containers, pre-crushers, auger-style compactors, transfer systems, and a wide array of options for virtually any application.








a DOVER company

TRANSFER STATIONS

BlokPak 3000® Transfer Systems



Perfect for:

-  Transfer Stations
-  Municipalities
-  Convenience Centers
-  Recycling Centers
-  Long-Distance Highway & Rail Systems

BlokPak 3000® Features

The **BlokPak 3000** is the largest Marathon® transfer system compactor. It compacts waste against a vertical gate, forming a 10' (3 meter) log in the compaction chamber. Each log is then ejected into the transfer trailer, and the process is continued until maximum payload is achieved. When the trailer is full, the **BlokPak 3000** can continue to be fed while changing trailers, saving valuable time. This unique design eliminates the need for expensive ejection type trailers.

High Capacity Transfer Stations

Marathon offers transfer system compactors that process up to 90 tons per hour.



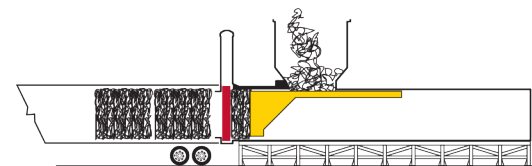
Specifications		
Structure Size (L x W x H)	53' 7" x 11' 7" x 17' 4 1/2"	17094mm x 3531mm x 5296mm
Charge Box (L x W x H)	99 1/2" x 75" x 95"	2527mm x 1905mm x 2413mm
Compaction Chamber (L x W x H)	107" x 78" x 79"	2718mm x 1981mm x 2007mm
Ram Cylinder	10"	254mm
Ram Force	235,500 lbs.	1048 kN
Ram Pressure	41.9 psi	289 kPa
Output Rate	Up to 90 tph (continuous)	Up to 81.6 mtph
Output Log Size	78" W x 79" H x Variable	1981mm x 2007 x Variable
Ram Penetration	60" into trailer	1524mm into trailer
Max. System Pressure	3,000 psi	207 bar
Main Cylinder Stroke	288"	7315mm
Main Pump Flow	200 gpm (regen)	757 liters/min.
Reservoir Capacity	400 gallons	1514 liters
Oil Cooler	Air to Oil	
Main Control Panel	120 VAC	
Main Motor	100 HP	74.6kW
Main Voltage	460 VAC, 3-Phase	
Controller	Programmable Color Touch-Screen	



The BlokPak 3000 forms 10' (3m) logs of densely packed waste.



The BlokPak 3000 has a 5' (1,5m) ram penetration. This ejects the final log into the trailer with very little spillage.



The BlokPak 3000 has a compaction chamber that densely compacts the waste before it's ejected into the transfer trailer. This enables much lighter-duty, open-top trailers to be used.

Pictures and mechanical diagrams in this literature are illustrative only and may not be to scale. Specifications are subject to change without notice in order to accommodate improvements to the equipment. Certified in compliance with ANSI standard Z245.2, all applicable OSHA Regulations. Products must be used only by trained operators in accordance with the Operator Manual, as well as applicable regulations, laws, and ANSI standards.



TRANSFER STATIONS



M-Series Compactors

Overview

M-Series Features

Marathon® M-Series Compactors are built tough for the high demands of transfer stations or heavy industrial applications. These compactors can be mounted on a platform to compact directly into the transfer trailer. Extended snouts can also be added to aid in clean breakaways.



This transfer station, located in Salem, VA, features two BlokPak 3000 compactors for non-stop processing as well as added redundancy. They are fed from a tipping-floor.



The BlokPak 3000 fits nicely into existing transfer stations with over-the-top feed systems such as this one located in Black Foot, ID.



This M-1475XW Transfer Station Compactor is fed via a tipping-floor and features the Scissor trailer connection system.



Transfer station compactors can be configured with custom hoppers and feed systems.



The BlokPak 3000 control station features a color touch-screen interface. This installation also has an integrated weighing system that displays the accumulating weight on-screen and on overhead monitors while the waste is being processed.

Specifications	M-450X	M-600XW	M-600X	M-800XW
Capacity	4.5 yd ³ 3.4 m ³	6 yd ³ 4.6 m ³	6 yd ³ 4.6 m ³	8 yd ³ 6.1 m ³
Overall Dimensions (L x W x H)	202" x 72 3/4" x 73 1/2" 5131mm x 1848mm x 1867mm	202" x 92 3/4" x 73 1/2" 5131mm x 2356mm x 1867mm	252" x 72 3/4" x 73 1/2" 6401mm x 1848mm x 1867mm	252" x 92 3/4" x 73 1/2" 6401mm x 2356mm x 1842mm
Clear-Top Opening	70" x 56" 1778mm x 1422mm	70" x 76" 1778mm x 1930mm	94" x 56" 2388mm x 1422mm	94" x 76" 2388mm x 1930mm
Weight	16,000 lbs. 7257 kg	20,000 lbs. 9072 kg	20,000 lbs. 9072 kg	24,000 lbs. 10886 kg
Ram Penetration	17" 432mm	17" 432mm	19" 483mm	19" 483mm

	Capacity (Per Hour)		CYL.	HP	GPM	Cycle Time	Max. Forces	Max. psi
M-450X & M-600XW	450X (56" W x 70" L Mouth)	600XW (76" W x 70" L Mouth)						
	223 yd ³ 171 m ³	309 yd ³ 236 m ³	7	20 14.9 kW	18.5 70 LPM	48 sec.	96,200 lbs. 428 kN	2,500 172 bar
	413 yd ³ 316 m ³	560 yd ³ 428 m ³	7	20 14.9 kW	50 189 LPM	26 sec.	96,200 lbs. 428 kN	2,500 172 bar
	172 yd ³ 132 m ³	236 yd ³ 180 m ³	8	20 14.9 kW	18.5 70 LPM	62 sec.	125,600 lbs. 559 kN	2,500 172 bar
	294 yd ³ 225 m ³	398 yd ³ 304 m ³	8	20 14.9 kW	50 189 LPM	33 sec.	125,600 lbs. 559 kN	2,500 172 bar
M-600X & M-800XW	600X (56" W x 70" L Mouth)	800XW (56" W x 70" L Mouth)						
	236 yd ³ 180 m ³	309 yd ³ 236 m ³	7	20 14.9 kW	18.5 70 LPM	62 sec.	96,200 lbs. 428 kN	2,500 172 bar
	432 yd ³ 330 m ³	566 yd ³ 433 m ³	7	20 14.9 kW	50 189 LPM	34 sec.	96,200 lbs. 428 kN	2,500 172 bar
	344 yd ³ 263 m ³	450 yd ³ 344 m ³	8	20 14.9 kW	50 189 LPM	43 sec.	125,600 lbs. 559 kN	2,500 172 bar
	521 yd ³ 398 m ³	683 yd ³ 522 m ³	8	20 14.9 kW	75 284 LPM	29 sec.	150,700 lbs. 670 kN	3,000 207 bar
M-1050XW	508 yd ³ 388 m ³		9	30 22.4 kW	75 284 LPM	51 sec.	159,000 lbs. 707 kN	2,500 172 bar
	665 yd ³ 508 m ³		9	50 37.3 kW	100 379 LPM	38 sec.	159,000 lbs. 707 kN	2,500 172 bar
	1,234 yd ³ 944 m ³		9	50 37.3 kW	125 473 LPM	20 sec.	190,800 lbs. 849 kN	3,000 207 bar
M-1475XW	720 yd ³ 551 m ³		9	30 22.4 kW	75 284 LPM	51 sec.	159,000 lbs. 707 kN	2,500 172 bar
	942 yd ³ 720 m ³		9	50 37.3 kW	100 379 LPM	38 sec.	159,000 lbs. 707 kN	2,500 172 bar
	1,749 yd ³ 1337 m ³		9	50 37.3 kW	125 473 LPM	20 sec.	190,900 lbs. 849 kN	3,000 207 bar

Pictures and mechanical diagrams in this literature are illustrative only and may not be to scale. Specifications are subject to change without notice in order to accommodate improvements to the equipment. Certified in compliance with ANSI standard Z245.2 and all applicable OSHA Regulations. Products must be used only by trained operators in accordance with the Operator Manual, as well as applicable regulations, laws, and ANSI standards.



For more information or to order, call 1-800-633-8974 or visit us at www.marathonequipment.com

TRANSFER STATIONS

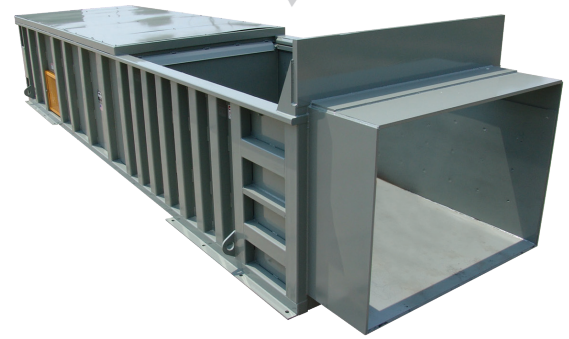


Rawhide Series®

Overview

Rawhide Series® Features

The **Rawhide Series** is a special option that can be applied to the M-Series 1050 and 1475 Compactors. It has a 48" ram penetration that is especially beneficial for packing out transfer trailers for a clean breakaway.



Packer Specifications

Specifications	M-1050XW	M-1475XW	M-1475 RAWHIDE SERIES®
Capacity	10.5 yd ³ 8 m ³	15 yd ³ 11.5 m ³	15 yd ³ 11.5 m ³
Overall Dimensions (L x W x H)	318" x 92 3/4" x 77" 8077mm x 2356mm x 1876mm	318" x 92 3/4" x 91" 8077mm x 2356mm x 2312mm	341 1/2" x 101 1/2" x 90" 8674mm x 2578mm x 2286mm
Clear-Top Opening	122 1/2" x 76" 3112mm x 1930mm	123" x 76" 3124mm x 1930mm	123" x 76" 3124mm x 1930mm
Weight	33,000 lbs. 14969 kg	36,000 lbs. 16329 kg	35,900 lbs. 16284 kg
Ram Penetration	24 1/2" 622mm	24" 610mm	47 1/2" 1207mm

Pictures and mechanical diagrams in this literature are illustrative only and may not be to scale. Specifications are subject to change without notice in order to accommodate improvements to the equipment. Certified in compliance with ANSI standard Z245.2 and all applicable OSHA Regulations. Products must be used only by trained operators in accordance with the Operator Manual, as well as applicable regulations, laws, and ANSI standards.

Optional Equipment

Marathon® Transfer System Compactors can be fitted with a variety of options, such as trailer connection systems, to suit your application. The hydraulic scissor extends to connect to the trailer's vertical pin latch. The hydraulic grab claws hold the trailer, using their side pockets. **Marathon** also manufactures EZ-TRAX Conveyors for an efficient way to feed your transfer system. Load cells can be utilized to keep track of the weight as the compaction trailer is being loaded to maximize payloads.



Extending Hydraulic Scissor Connector



Hydraulic Grab Claws



EZ-TRAX Conveyor System



Load Cell Weighing System

We're Here To Help!

For detailed specifications, recommendations, or to request a site survey comparing various systems, contact the Marathon® Sales Team at MarathonSales@MarathonEquipment.com

Authorized Dealer:



Awarded Contract

Contract # 040621-MEC

Marathon Equipment Company | P.O. Box 1798 | Vernon, AL 35592-1798

Learn more about Marathon Equipment: **800.633.8974** | www.marathonequipment.com